

Automatic filling unit art. GA 00



The automatic filling unit GA 00 is suitable to closed-circuit heating systems. The unit consists of a pressure reducing valve, a shut-off valve and a check valve. Its main purpose is to automatically fill the plant when needed, until a predefined pressure is achieved. GA 00 is equipped with pressure gauge.

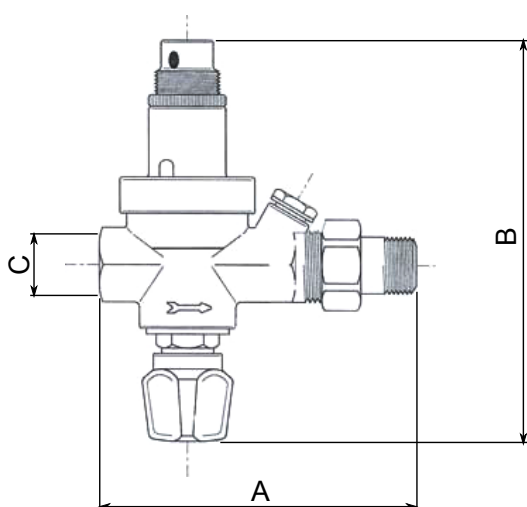
TECHNICAL FEATURES

Max inlet pressure: 16 bar
 Outlet pressure adjustment range: 0.5÷4 bar
 Factory setting: 1.5 bar
 Max working temperature: 80 °C

MATERIALS

Body, diaphragm and other inner parts: CW617N brass
 O-rings: NBR
 Flat-seal gaskets: asbestos-free gasket material
 Plastic parts: PA66

DIMENSIONS



ART.	COD.	A	B	C
GA 00	509000	112	120	1/2"

■ OPERATING INSTRUCTIONS

Installation

Filling unit GA 00 operation is not influenced by gravity. However, horizontal upwards or vertical positions are recommended in favour of horizontal downwards.

The unit should be installed between isolation valves, so to make possible maintenance operations easier.

Outlet pressure adjustment

Outlet pressure factory setting is 1.5 bar. Outlet pressure can be adjusted even after the unit has been installed. To modify pressure, loosen the black ring in plastic and turn the knob clockwise to increase the outlet pressure, or anti-clockwise to reduce it, as shown in Fig.1. The value can be read on the pressure gauge installed on the unit.



Fig. 1: Outlet pressure adjustment procedure.

Manual shut-off

GA 00 features a shut off valve with a black knob, that can be operated when manual stop of plant filling is required. To stop/exclude plant filling, turn the black knob clockwise.

I.V.A.R. S.p.A.

Via IV Novembre, 181

25080 Prevalle (BS) – ITALY

T. +39 030 68028 – F. +39 030 6801329

info@ivar-group.com – www.ivar-group.com

I.V.A.R. S.p.A. reserves the right to make enhancements and changes to products and relative documentation at any time without prior notice. All rights reserved. Reproduction, even partial, is forbidden without prior permission by the copyright owner.